

# Luminous Transmittance TLV-305-LC

**Quick check of transmittance with a value close to sensitivity of human eyes**



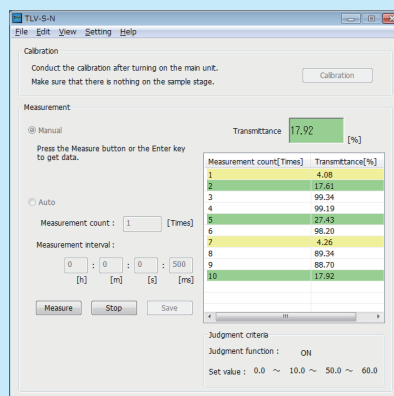
## Features

- Built-in photopic filter
- One-touch calibration
- Less effect of ambient light
- Compact and space-saving design
- Judgment function
- Maintenance-free long life LED lamp
- Remote control software

## Measurement Sample

- Transparent conductive film glass
- Film
- Resin material
- Eyeglass lens
- Glass blank
- Filter glass

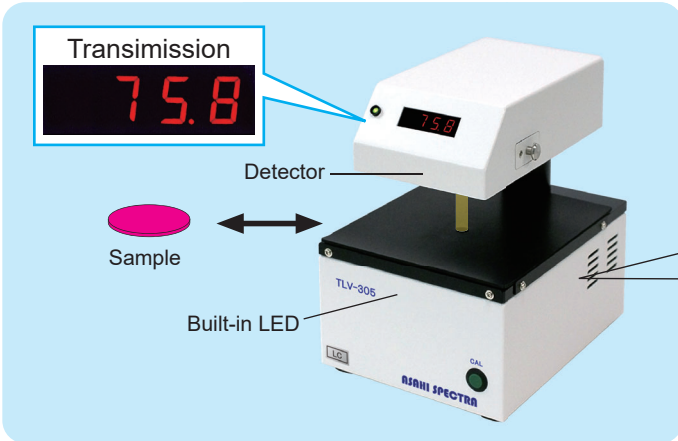
## Software



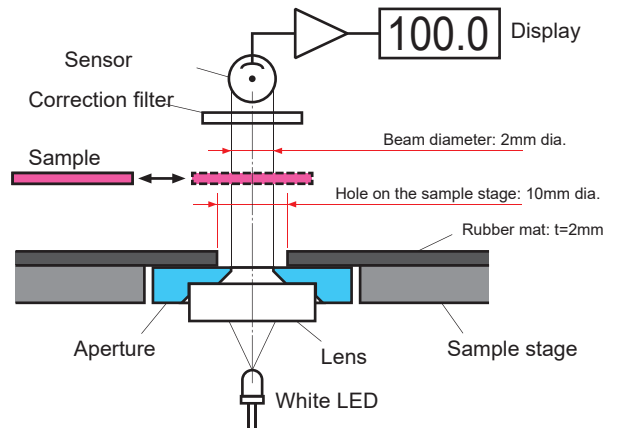
- Setting of measurement conditions
- List of measurement results
- Setting of judgment criteria

# Product Outline

The TLV-305-LC is a compact transmittance meter with a correction filter which approximates to the luminosity curve. This unit quickly measures the transmittance with a value close to sensitivity of human eyes and allows easy measurement by placing a sample after one-touch calibration. It is suitable for a quick inspection process to conduct large volume of measurements.



## Optical Configuration



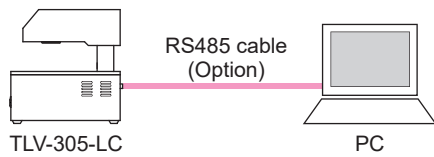
It is calibrated as 100% without a sample on the stage. After placing a sample, it displays the actual transmittance.

## Less effect of ambient light

Stable measurement is achieved by separating a measurement light from an ambient light with pulse operation of the white LED.

## RS485 Remote Control

It is possible to calibrate and get the transmission data by PC via RS485.



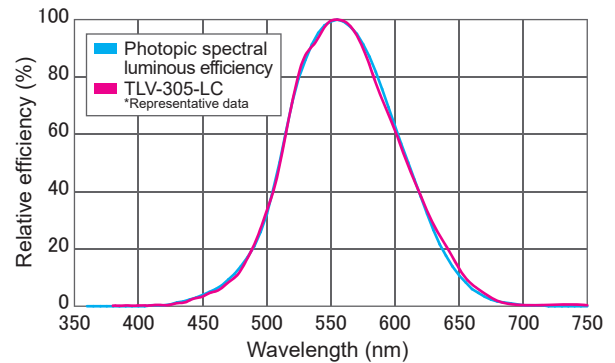
## Options

- RS485 cable for software

## General Specifications

- Model: TLV-305-LC
- Photo sensitivity: Approximation of photopic spectral luminous efficiency
- Light source: White LED
- Display: 4 digits digital display (xxx.x) Unit: %
- Measurement reproducibility: 0.5% or less
- Beam diameter: 2mm dia.
- Judgment function: Green indicator (On, Off or Blink)
- Input voltage: AC100-240V  $\pm 10\%$  50/60Hz
- Apparent power: 7VA or less \*In case AC100V input/50Hz 10VA or less \*In case AC240V input/50Hz
- Remote control: RS-485 \*The cable is optional.
- Control method: Built-in buttons or remote control by PC (Dedicated software)
- Software operating environment: Windows 10, Windows 11 (Supported language: Japanese/English)
- Safety mechanism: Built-in fuse Shutdown at AC input overcurrent
- \*Rating: 0.5A/250VAC, High breaking capacity, Time delay type 5mm dia. x 20mm
- Recommended environment: Temperature 10 - 35 deg C Humidity less than 70% \*Avoid condensation
- Dimensions: 150(W) x 204(D) x 211(H)mm
- Weight: 2.6kg

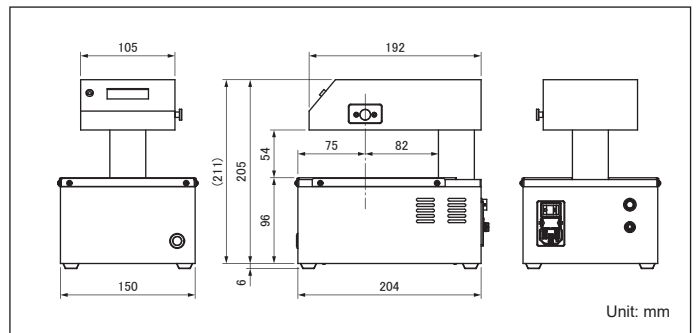
## Photo Sensitivity



## Scope of Delivery

- TLV-305-LC main unit
- AC cable (3m)
- Instruction manual
- Software \*Download

## Dimensions



Contact us for customization, such as for UV / IR range and large samples.

\*Product specifications are subject to change without notice.

# ASAHI SPECTRA

Gardenia Bldg. 4F, 2-13-1 Kamijujo, Kita-ku, Tokyo 114-0034 Japan  
 Phone: +81-3-3909-1151 / FAX: +81-3-3909-1152  
 E-mail: info@asahi-spectra.com

[www.asahi-spectra.com](http://www.asahi-spectra.com)